



## City of Auburn, Maine

Office of Planning & Permitting

Eric Cousens, Director

60 Court Street | Auburn, Maine 04210

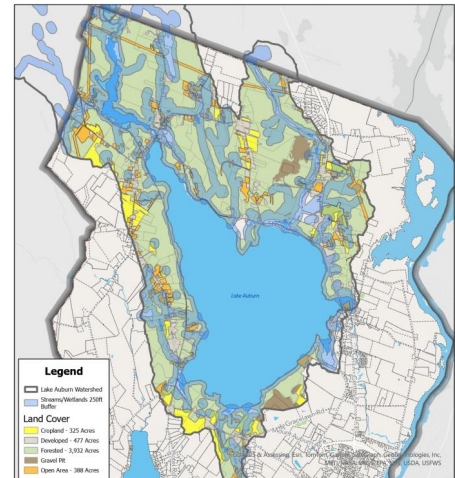
[www.auburnmaine.gov](http://www.auburnmaine.gov) | 207.333.6601

To: Auburn Planning Board  
From: Department of Planning and Permitting  
Re: **Item #5** Map Amendment Related to Lake Auburn Stakeholders Group  
Date: July 16, 2024

**I. PROPOSAL: WORKSHOP/ MAP AMENDMENT:** Consider adopting the Lake Auburn Watershed Land Use Map proposed by the Lake Auburn Stakeholders Working Group initiated by City Council depicting 250 ft agricultural setback and buffer requirements from streams, brooks, and wetlands connected with Lake Auburn. This map will be referred to in Chapter 60, Article XII Division 4 Lake Auburn Watershed Overlay District and will be considered in accordance with Chapter 60, Article XVII Division 2- Amendment to the Zoning Ordinance or Zoning Map. This map was proposed by the Lake Auburn Stakeholder Group pursuant to order 04-01022024 and order 71-05062024.

### III. SUGGESTED FINDINGS OF FACT:

1. The amendments are consistent with the growth pattern specified in the Future Land Use Plan in Auburn's Comprehensive Plan.
2. The proposed map and text amendments serve Goal A.1 in the Comprehensive Plan to maintain the exceptional water quality of Lake Auburn and existing waiver from filtration to avoid or delay the need for costly treatment (pages 4-9)
3. These proposed amendments are in service of Goal B.1 in the Comprehensive plan, to ensure sufficient clean water supplies to meet current and future needs (pages 20-21).
4. These amendments align with the Lake Auburn Study, 2021; and the report by FB Environmental: Lake Auburn Memo from August 2022.
5. These amendments are the result of several public meetings with the Lake Auburn Stakeholders Group as ordered by City Council.



### IV. PLANNING BOARD ACTION/STAFF RECOMMENDATIONS:

**E.) Lake Auburn Watershed Overlay District Septic Systems Inspection Map:** This item proposes adopting a map which identifies streams, brooks, and wetlands connected with Lake Auburn for the purpose of applying a 250-foot vegetated buffer setback for certain agricultural, forestry, lawn maintenance, and related activities. The purpose of this map is to aid staff and residence in visualizing the 250-foot buffer requirement referenced in the amendments to Division 4 Lake Auburn Watershed Overlay District. Staff recommends this map amendment.

